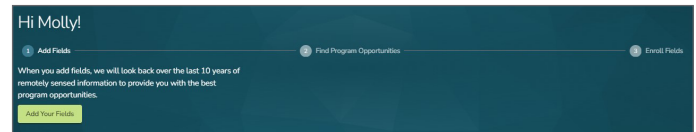


MYPORTAL FARMER ENROLLMENT INSTRUCTIONS

Welcome to **Truterra MyPortal**, your resource for Truterra Program(s) enrollment. MyPortal enables farmers and/or Truterra network providers to add field boundaries and complete enrollment. This resource will guide you through enrollment.

Add fields to begin enrollment

1

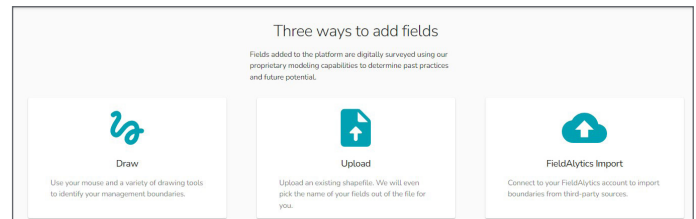


Upload or draw field boundaries

Rename fields, if needed

Confirm Info for fields

2

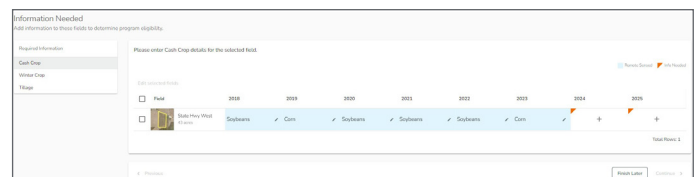


More Information Needed

Select all fields and **Add Information**

to complete missing information

3

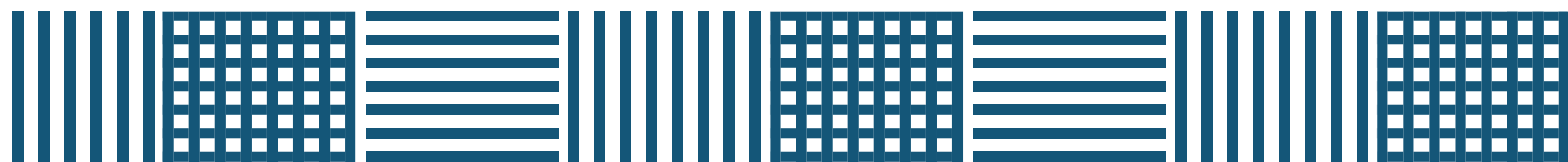
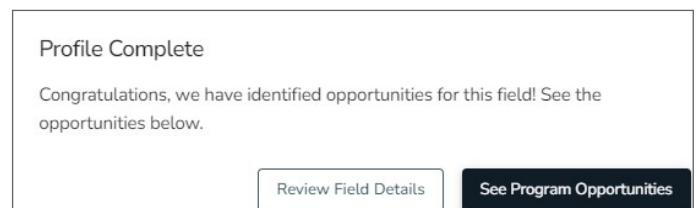


Add cash crop, winter crop and tillage information for all fields

Upon completion of field details,

See Program Opportunities

4

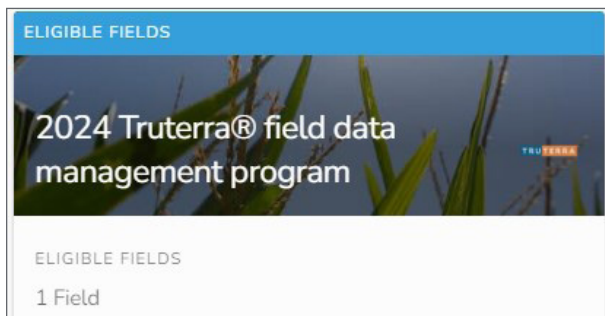


MYPORTAL FARMER ENROLLMENT INSTRUCTIONS

Select available programs for eligible fields based on geography

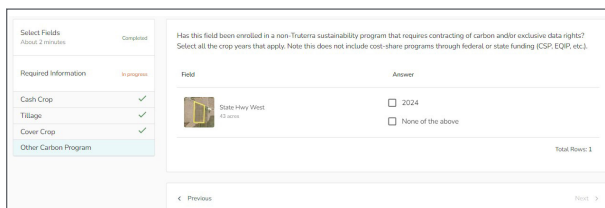
Select & Add Fields to enroll fields

5



Complete additional required information for all fields

6

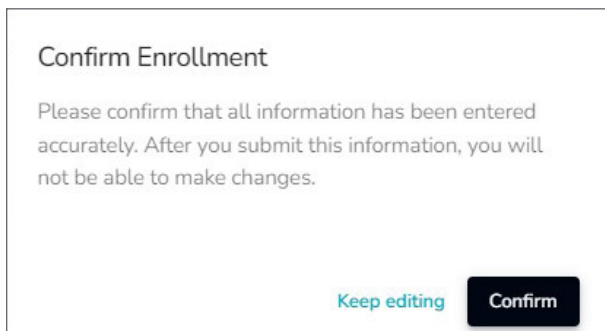


Complete enrollment for selected fields

Commit enrollment

Agree to participation in program

7



Program Dashboard

Verify completion of enrollment

Next steps: receive program agreements for signature from DocuSign within 3 business days

8

